

Hydro-pneumatic accumulators spherical

AF

500 bar

Maximum pressure 500 bar
 Extreme operating temperatures – 20°C à + 100°C

AS

400 bar

Maximum pressure 400 bar
 Extreme operating temperatures – 20°C à + 100°C

■ **Technical description**

LEDUC spherical accumulators consist of two hemispherical shells which are screwed together and which hold a diaphragm. This diaphragm has a metal stud which closes off the operation hole when the fluid is completely discharged. There is therefore no danger of damage to the diaphragm.

The gas side port is fitted with a charging valve allowing the pressure in the accumulator to be checked or changed.

Séparateur:
 - Série, Nitrile: de – 20°C à + 100°C
 - Spécial: de – 40°C à + 100°C en usage dynamique.

■ **Advantages**

The diaphragm only changes position, the elastomer in fact works little. The HYDRO LEDUC spherical accumulator owes most of its qualities to its diaphragm and metal pin:

- excellent gas/fluid tightness.
- possibility of total and rapid discharge.

Can be adapted to suit a wide range of fluids.hanged.

■ **Protection**

Available on request for AF and AS versions: ARCOR® anti-corrosion treatment.

■ **Deformation of the diaphragm**

■ **Filling gas**

Nitrogen only.

■ **Operating fluids**

- Mineral-based hydraulic fluids: standard diaphragm.
- Corrosive or non-standard fluids: please consult our Customer Service Department.

■ **Volumetric ratio $(V_0 - V_2)/V_0$**

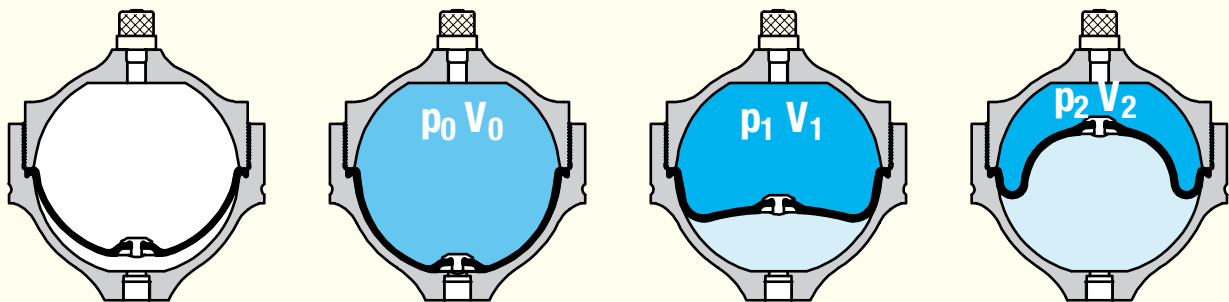
The volumetric ratio of this type of accumulator is 0.75.
 For example: an AX 1 accumulator can take in a maximum volume of $0.75 V_0 = 0.75 \times 1 = 0.75$ litres.

■ **Accessories**

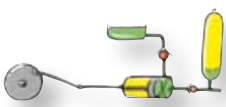
Safety blocks, see pages 12 and 13.
 Fixation devices, see page 11.
 Adaptateurs, voir page 11.

■ **Order codes**

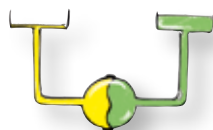
See page 3.



■ **Examples of applications**



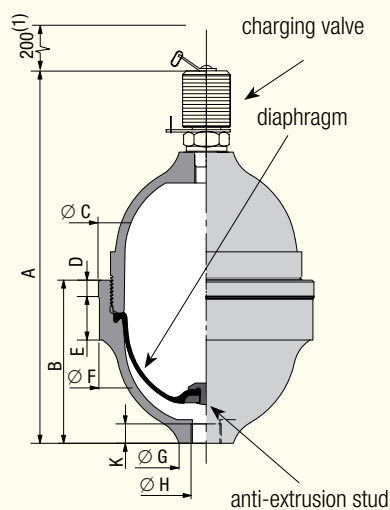
Pulsation dampening



Transfer

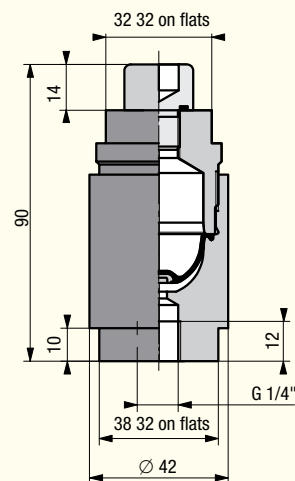


AS-AF



(1) dimensions with VGL 4 fitted

AC 00 02



AF	reference	nitrogen capacity V_0 litres	maximum pressure bar CE	weight kg	dimensions (mm)								
					A	B	Ø C	D	E	Ø F	Ø G	Ø H	K
AF 00 50	060972	0.45	500	2.8	184	89	114	12	23	112.5	40	G3/8"	16
AF 01 00	060110	1.1	500	5.5	197	112	163.5	50.5	50.5	163.5	40	M18 x 1.5	12

AS	référence	nitrogen capacity V_0 litres	maximum pressure bar CE	weight kg	dimensions (mm)								
					A	B	Ø C	D	E	Ø F	Ø G	Ø H	K
AS 00 20	060932	0.19	400	1.2	150	69	84.5	9	20	83.5	29	G1/4"	12
AS 00 50	060972	0.45	400	2.8	184	89	114	12	23	112.5	40	G3/8"	16
AS 00 70	060782	0.65	250	3	197	89	119.5	9	24	118.5	30	G3/8"	13
AS 01 00	060110	1.1	400	5.5	197	112	163.5	50.5	50.5	163.5	40	M18 x 1.5	12
AS 02 50	060812	2.55	400	14	251	161	213.5	37	29	210	51	G3/4"	17
AS 04 00	060121	4.1	400	22	298	202	251	44	40	247	105	M33 x 2	20
AS 10 00	060141	10.19	400	53	391	268	339	52.5	52.5	333	105.1	M33 x 2	20

AC 00 02	060955	0.017	400	0.640	see drawing above								
----------	--------	-------	-----	-------	-------------------	--	--	--	--	--	--	--	--